

OHIO EARTH FOOD

5488 Swamp St., N.E.
HARTVILLE, OHIO 44632
Phone 330-877-9356
Fax 330-877-4237
www.ohioearthfood.com

ORGANIC PRODUCTS FOR LAWN, GARDEN, FARM & COMMERCIAL USE JANUARY 2013

QUANTITY PRICES (Ton Lots or more) AVAILABLE UPON REQUEST



ALL PRICES F.O.B. HARTVILLE, OH, AND SUBJECT TO CHANGE WITHOUT NOTICE

OFFICE HOURS: 8 A.M. - 5 P.M. Weekdays
ADDITIONAL HOURS April 6th - May 25th 8 A.M. - Noon Sat.

SERVING SUSTAINABLE AGRICULTURE SINCE 1972

NATURAL FERTILIZERS

RE-VITA COMPOST PLUS (3-3-3) *

A 100% natural blend of composted poultry manure, kelp, and humate, Re-Vita Compost Plus 3-3-3 is a complete fertilizer for a variety of uses. Contains a balanced source of nitrogen, phosphorus, and potash in a slow release form will feed your plants throughout the season. The addition of kelp and humate provide a complex of trace minerals and bio-stimulants easily assimilated by plants. These substances, plus a high calcium content, enhance germination, root growth and overall soil and plant health. Re-Vita 3-3-3 improves structure, water holding capacity and aeration of the soil. It also revitalizes the biological activity in the soil. Re-Vita 3-3-3 is in a uniform, granular form which is easy to use. Excellent for gardens, flowers, shrubs, trees, and small grain field crops such as wheat and oats. Apply 5 lbs. per 100 row ft. or 2 lbs. per 100 sq. ft. for gardens, 2-3 lbs. per inch of diameter for fruit and shade trees, 50 lbs. per 3,000 sq. ft. for lawns, and 250-300 lbs. per acre for field crops. (53#)

50 lb. Bag \$14.60



Plaese note

(1) * indicates products are NOP (Nat'l Organic Program) compliant to the best of our knowledge. Certified growers should confirm acceptability with their certification agency.

(2) Numbers in parentheses -- for example (53#) -- indicate the shipping weight (lbs.) per unit.

RE-VITA PRO (5-4-5) *

An all natural blend of composted poultry manure, kelp, humate, feathermeal and sulfate of potash, this popular fertilizer enhances root growth and supplies higher nitrogen and potash for crops that need these nutrients such as lettuce, corn, tomatoes and root crops. The extra nitrogen and potash in addition to all the trace minerals and the live biological activity provided by the Re-Vita Compost Plus 3-3-3 make this a superb choice for produce and field crops that are high nitrogen feeders. Also, contains 9-12% calcium for healthy plant growth. Apply 5 lbs. per 100 row ft. or 2 lbs. per 100 sq. ft. for gardens, 2-3 lbs. per inch of diameter for fruit and shade trees, apply 50 lbs. per 3,000 sq. ft. for lawns, apply 250-300 lbs. per acre for field crops, and 400-500 lbs. per acre for vegetables. (53#)



50 lb. Bag 19.00

RE-VITA HI-K (2-3-16) *

An all natural blend of composted poultry manure, kelp, humate and sulfate of potash providing a biologically live fertilizer high in potassium. Improves soil low in sulfur and potash without high chlorine. Excellent for root crops such as potatoes, carrots, beets, and turnips, as well as alfalfa and soybeans. Apply 5 lbs. per 100 row ft. or 2 lbs. per 100 sq. ft. for gardens, 250-300 lbs. per acre for field crops. (53#)

50 lb. Bag \$22.40

RE-VITA ORGANIC LAWN (8-3-3) *

An excellent all natural lawn fertilizer made from composted poultry manure, feathermeal, blood meal, sulfate of potash, kelp and humate. It provides essential primary nutrients in a slow release form which feeds the turf slowly over the season. Naturally occurring microorganisms aid in decomposition of grass clippings and help prevent thatch build up. Secondary and trace elements are supplied by the kelp and humate which stimulate root growth, promote healthy growth, enlivens green color and enhances resistance to stress such as drought. Re-Vita 8-3-3 restores and builds lawn and soil structures. It helps prevent diseases such as fusarium, snow mold, leaf spot, red thread, dollar spot, and brown patch. Used by golf courses and lawn care services. Easy to spread granular form. Only two applications per year are needed -- 10 lbs. per 1,000 sq. ft. spring and fall. (53#)

40 lb. Bag \$27.00

RE-VITA COMPLETE (5-4-3)*

A organic fertilizer made from 100 % natural sources. Revita is a robust slow release fertilizer suitable for all organic soil fertility needs. The addition of North Atlantic kelp and humic acid derived from leonardite provides a complex of trace minerals in bio stimulants easily assimilated by the plant. These substances contribute to more vigorous plant growth healthier root systems greater yield potentials in higher levels of mineral content in the plant. Re-vita Breathes new life into your soil by adding organic matter in soil inhabiting organisms. (27#)

25 lb. Bag \$12.90

Why Re-Vita Fertilizers are Special

Our proprietary blend of all natural, organic Re-Vita fertilizers have been providing our loyal customers with proven results for decades.

Re-Vita is made from a unique blend of composted poultry manure, humate and seaweed like no other. We use only egg laying chickens for our poultry manure which is high in calcium, typically 9% - 12%, a vital nutrient for plant health. Humate is then added to the mix. It is a mined, highly compressed and concentrated substance rich in organic matter thriving with nutrients that also enhances plant health and soil fertility. Seaweed -- the North Atlantic kelp "Ascophyllum Nodosum" -- also contributes natural growth enhancers for plants as it stimulates root growth for absorbing nutrients. Humate and seaweed also provide the added benefits of improving soil structure, aeration, water holding capacity, root development, and production of chlorophyll. Lastly, our composting process takes approximately six weeks to complete, slowly breaking down organic matter through microbial activity which adds vital nutrients to the soil, while unlocking others, enlivening plant growth.

As a result, our Re-Vita fertilizers are a rich source of organic matter, key nutrients and biological activity. Billions of microscopic organisms such as bacteria, fungi and protozoa occupy every bag of our fertilizers--micro organisms that will bring your soil to life and maximize the availability of needed nutrients.

SOFT ROCK PHOSPHATE *

A granular, natural colloidal soft phosphate that contains 20% P_2O_5 and 20% calcium plus minor and trace minerals. Supplies phosphorus which is needed by all plants for cell enlargement and division, photosynthesis, and respiration. Promotes early root formation and growth. Also encourages the growth of earthworms and soil bacteria that enrich and aerate the soil. Slow release so it will not leach away like chemically treated or synthetic phosphate. 2% phosphate immediately available. Apply 1-3 lbs. per 100 sq. ft. for gardens, 300-1,000 lbs. per acre for farm crops. (53#)

50 lb. Bag \$15.00



CORN GLUTEN LAWN PLUS (9-0-0) *

A pre-emergent herbicide and early spring lawn fertilizer derived from corn gluten meal. Prevents a broad range of weed seeds from germinating including crab grass and dandelions. Slowly releases nitrogen to keep your lawn thick and green. Apply in late March or early April. Then use Revita Organic Lawn Fertilizer 8-3-3 in May for other needed nutrients which promote a healthy, lush lawn. Apply 20 lbs. per 1,000 sq. ft. in early spring and early fall during the first year and 10 lbs. per 1,000 sq. ft. spring and fall in succeeding years. Wait until after first mowing to apply to new grass seedings. (53#)

50 lb. Bag \$41.50



FEATHERMEAL *

A 12-14% organic nitrogen made from hydrolyzed ground feathers. Slow release. Will not burn seeds and foliage. Use on corn, lettuces, lawns and other crops that need extra nitrogen. Apply $\frac{1}{2}$ -1 lb. per 100 sq. ft. on gardens and lawns; 100-300 lbs. per acre on field crops. (53#)

50 lb. Bag \$31.50

FISH MEAL (10-6-2) *

Contains 10% nitrogen, 6% phosphorus, 2% potassium and trace minerals in slow release form. Preserved with Naturox. Suitable for organic growers. Use on all types of plants. Will not burn, builds soil humus, and safe to use anytime. Use 10 lbs. per 1000 sq. ft. or 400 lbs. per acre. (53#)

50 lb. Bag \$73.00

DRIED BLOOD *

A slow release, 12% organic nitrogen source. Excellent as a side dressing when extra nitrogen is needed. Stimulates bacterial growth. Also useful as a temporary deer and rabbit repellent. Use 2-3 lbs. per 100 sq. ft. or as a side dress.

3.5 lb. Bag (5#) \$12.25
25 lb. Bag (28#) \$30.00
50 lb. Bag (53#) \$58.00

BONE MEAL *

Steamed, finely ground bone providing 12% phosphorus, 22% calcium and 4% nitrogen. Promotes strong, vigorous bulbs, healthy root systems and good blooming. Excellent for flowers, roses, garden bulbs, shrubs and trees. Use 5 lbs. per 100 sq. ft.

10 lb. Bag	(12#)	\$15.75
24 lb. Bag	(27#)	\$30.75



SUL-PO-MAG (0-0-22)

Sulfate of potash magnesia. Contains 22% potash (K_2O) and 25% sulfate of magnesia (sulfur and magnesium). Will not alter soil pH. Good for soils deficient in potash but high in calcium. Use $\frac{1}{2}$ -1 lb. per 100 sq. ft.; 200-400 lbs. per acre. (53#)

50 lb. Bag	\$25.75
------------	---------

COTTON SEED MEAL *

Average analysis 6% nitrogen, 2% phosphate, and 1% potash. Slow release. Will not raise soil pH. Good for acid loving plants such as azaleas, rhododendrons, and blueberries. Apply at 2 lbs. per 100 sq. ft. (53#)

50 lb. Bag	\$31.00
------------	---------

SULFATE OF POTASH (0-0-50) *

A mined, all natural source of potash (50%) without chlorine. Also contains 18% sulfur. Use $\frac{1}{2}$ lb. per 100 sq. ft. or 200 lbs. per acre. (53#)

50 lb. Bag	\$36.00
------------	---------

JERSEY GREENSAND *

A 7% potash base exchange mineral mined from a marine deposit. Also contains 22 other minerals. Helps loosen compacted soils. Highly recommended for conditioning pastures, lawns, orchards, fields, and gardens. Apply 2-4 lbs. per 100 sq. ft. or up to 1,000 lbs. per acre. (53#)

50 lb. Bag	\$17.25
------------	---------

AGRO-LIG HUMATE *

A mined, naturally occurring organic leonardite containing 65-75% high quality humic acids, 31% carbon, and a complex of other nutrients similar to chelates. Stimulates plant enzymes, root growth and beneficial soil organisms. Continued use improves the structure and organic content of the soil. For gardens apply 2 lbs. per 1000 sq. ft.; Field crops 100 lbs. per acre. (53#)

50 lb. Bag	\$15.50
------------	---------



Humates are an excellent additive to any fertilizer or foliar spray program. They have their own beneficial qualities as well as enhancing effects on other fertilizers and sprays.

SEA-MIN KELP MEAL *

Ascophyllum Nodosum kelp meal which contains 60 trace minerals in chelated form, 14 vitamins, plant growth regulators, enzymes, and hormones. Research shows that kelp improves seed germination, root and plant growth, fruit set, and overall health of plants. Makes plants more disease and stress resistant. Increases soil fertility and microbial population. See "Seaweed and Plant Growth" in the book section. Broadcast using ¼ lb. per 100 sq. ft. or 200 lbs. per acre. As **animal feed supplement** see Feed Supplements Section.

10 lb. Box	(12#)	\$15.00
25 lb. Bag	(28#)	31.00
50 lb. Bag	(53#)	55.25


*Trace elements are just as important for plant growth and development as N-P-K, but because they are required in much smaller amounts, they are often neglected by growers. Seaweed extract provides trace elements in a naturally chelated form that are readily assimilated by plants. These chelated agents raise **bricx levels** (amount of sugar in plants and also help release the previous unavailable nutrients and other substances from the soil for the plant to use. Foliar feeding liquefied seaweed results in the trace elements and bio-stimulants reaching the sap stream far more quickly than they would if applied to the soil - one hour as opposed to several days. Wastage through leaching is also cut down to a minimum.*

JUMP START D-10 *

An easy to use, dry meal formula of our effective Jump Start Soluble Powder. Get all the benefits of Jump Start by applying D-10 through insecticide boxes, fertilizer attachments or other equipment on planters in or beside the row with the seed at a rate of 10 lbs. per acre. (53#)

50 lb. Bag \$44.40

WORM CASTINGS (1-0-0) *R

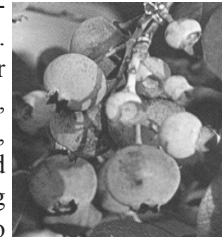
A pure, all natural plant food produced by the incredible earthworm.  Non burning, long lasting. Helps plant and root growth and improves aeration of soil. Use in gardens and flower beds at rate of ½ cup per plant every two months. In potting mixes add 1 part earthworm castings to 3 parts soil. For roses mix 4 cups into soil around each plant. (23#)

20 lb. Bag \$12.90

SOIL AMENDMENTS

SULFUR *

90% sulfur for soil application. Useful in lowering soil p.H. Excellent for blueberries, rhododendrons, azaleas and other acid loving plants. Easy to spread granular form. Use according to soil test recommendations do not over apply. Maximum use 100 lbs. per acre or ¼ lb. per 100 sq. ft. (53#)



50 lb. Bag \$24.50

GYPSUM *

Pelletized, mined, natural calcium sulfate. Supplies 21% calcium and 16% sulfur. Loosens tight clay soils, aiding aeration and water penetration. Use when calcium and sulfur are needed and pH is high. Use 2-3 lbs. per 100 sq. ft. (43#)

40 lb. Bag \$7.60

PELLETIZED DOLOMITE LIME *

A dust free dolomitic limestone. Easily spread with any type fertilizer equipment. Supplies 21% calcium and 12% magnesium. Use 3-5 lbs. per 100 sq. ft. (53#)

50 lb. Bag \$7.50

DOLOMITE LIME *

A natural liming material which supplies 21% calcium and 12% magnesium. Use on soils low in calcium and magnesium. Apply 3-5 lbs. per 100 sq. ft. (53#)

50 lb. Bag \$7.00

HI-CALCIUM LIME *

A pelletized lime containing 30% calcium and 4% magnesium. Easy to spread. Use on soils low in calcium but high in magnesium. Apply 3-5 lbs. per 100 sq. ft. (53#)

50 lb. Bag \$7.50

*What kind of **lime** do you need?
If you need calcium and magnesium you should use Dolomite Lime.
If you need calcium, but your magnesium is adequate, use Hi-Calcium Lime.*

FOLIAR SPRAY

MAXICROP LIQUIFIED SEAWEED

A liquid kelp made from the whole non fibrous content of seaweed. Contains a complex of over 60 chelated minor elements and bio-growth stimulants which have tremendous effect on seed germination, root development and general growth. Reduces transplant shock. Enhances disease resistance. All plants, trees, shrubs and grass benefit from the use of seaweed. Use as a foliar spray, transplanting solution or seed inoculate. Mix 2 tablespoons per gallon of water. Spray every 2-3 weeks.



Quart	(3#)	\$10.75
Gallon	(10#)	24.95



LIQUID FISH FERTILIZER (5-1-1) *

A liquid fish emulsion made from seagoing fish. Provides nitrogen, phosphorus and potassium needed for plant growth in a readily available form. Will not shock or burn plants. Can be mixed with liquid kelp and humate. Use as a foliar spray or watered in. Dilute 3 tablespoons per gallon of water.

Quart	(4#)	\$ 9.75
Gallon	(12#)	\$ 21.50

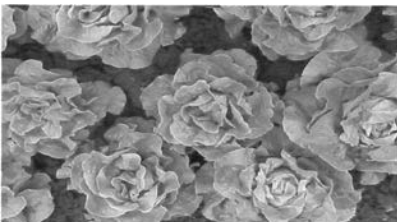
BIO-HUME
12% CONCENTRATED
LIQUID HUMUS *

A 12% liquid humus derived from Leonardite. Enhances nutrient uptake of major nutrients (N-P-K) and trace elements like iron, zinc, and manganese. Increases seed germination, cell division, and root development of plants. Also improves structure, aeration, drainage and water holding capacities of soil. Has no effect on soil pH. Use on flowers, vegetables, lawns and field crops. Soil application use 2 oz. per 1,000 sq. ft.; Transplanting and foliar feeding of fruits, vegetables, and lawns use 1 oz. per 1,000 sq. ft. Applications should be mixed in a minimum of 1 gallon water. On field crops use 2 pints per acre. Can be mixed in same spray with liquid seaweed.

1 Gallon (10#) \$20.00
 5 Gallon Pail (52#) \$73.00
 (Add additional UPS charge of \$8.00 per 5 gallon pail)

Foliar Feeding Pays!

Combine liquid seaweed, liquid fish and Bio-Hume to make a superior foliar spray. Use one tablespoon liquid seaweed, two tablespoons liquid fish and two tablespoons Bio-Hume per gallon of water. Apply to your garden and lawn every two weeks. You'll be amazed at the results!



MAXICROP PLUS IRON

The same liquid kelp concentrate as Maxicrop Liquid Seaweed, but with 2% Iron added to help green up yellowing leaves and give new life to your lawn. Also a must for iron loving plants like azaleas, camellias, evergreens, and rhododendrons. Use 2 tablespoons per gallon of water.

Quart (3#) \$11.90
 Gallon (10#) 27.15

JUMP START *

A biological mix of natural, soluble materials containing major nutrients, trace elements and bio-stimulants. Enhances seed germination, early root development, and creates an environment in the soil for more biological activity, which improves soil tilth. Improves nutrient uptake of plants for higher yields and healthier crops. Use in the row, in liquid planters or broadcast sprayed at planting. Can also be used in transplant solution and as a foliar spray during growing season to improve plant growth. Use 1 lb. per acre mixed with 1 gallon or more of water.

20 lb. Pail (26#) \$144.50

MAXICROP SOLUBLE
SEAWEED POWDER *



A dehydrated seaweed extract with all the benefits of liquid seaweed, but at a lower cost. Easy to use powder dissolves quickly for spraying. One teaspoon makes a gallon of spray. (10.7 oz. powder makes one gallon of liquid concentrate.) Field crops general application: 2 lbs. per acre over the season.

10.7 oz. Pouch (2#) \$19.25
 22 lb. Carton (25#) 209.00
 4 lb. Carton (4#) 395.00

STIMPLEX CROP BIOSTIMULANT *

A natural plant growth stimulant containing Cytokinins and a complex matrix of plant nutrients, trace elements, carbohydrates, and amino acids occurring in *Ascophyllum* Seaweed. Enhances plant growth and development by stimulating biological activity and cell division. Increases fruit set, brix levels and earlier maturity. Improves crop quality, marketable yields, and resistance to environmental stress. Use 1½-2½ pints per acre on vegetables, 2 pints per acre on field crops, 2-3 pints per acre on fruit, and 1½-2 pints per acre on turf. Rates are per application.

2½ Gallon Jug (26#) \$155.00
5 Gallons (52#) 300.00

ASCO-SPRAY SEAWEED POWDER *

A dehydrated seaweed extract from *Ascophyllum Nodosum*. Contains a complex of over 60 chelated minor elements and growth promoting substances which enhance plant development, healthier root systems, color, and vigor. Increases germination, yields and levels of valuable contents of plants such as brix levels, proteins and trace elements. Promotes microbial activity in soil. Can be used as a foliar feed, seed treatment and as a starter fertilizer in combination with other liquid fertilizers. Easy to use powder. Use 1 teaspoon per gallon of water. (10.7 oz. makes 1 gallon liquid concentrate.) Field crops general application: 2 lbs. per acre over the season.

22 lb. Carton (25#) \$198.00
44 lb. Carton (49#) 387.50

FISH FERTILIZER SOLUBLE POWDER (12-0-0) *

A hydrolyzed, soluble fish powder used to make liquid fish fertilizer. Use when extra nitrogen is needed and during periods of stress such as pre-bloom, early leaf development, and fruit set. Combine with kelp extracts for even better results. 1 lb. makes 1 gallon of liquid fish concentrate or use 2-4 lbs. powder per acre.



20 lb. Carton (22#) \$ 86.00
40 lb. Carton (43#) 153.00

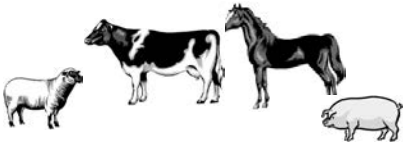
HUMUS WP 80 *

A highly concentrated, water soluble humate containing 80% humic acid extracted from ground leonardite. Increases seed germination, stimulates root and plant growth and improves plant nutrition. Converts unavailable minerals into soluble forms that plants can assimilate. Increases aeration and water holding capacity of soil. Can be used before planting, at time of planting, as a side dress, and in transplant water. Use 3-10 lbs. per acre on vegetables divided into three applications, 3-10 lbs. per acre on pasture and field crops, and 2-4 lbs. per acre on turf divided into several sprays. (59#)

50 lb. Drum \$385.00



ANIMAL FEED SUPPLEMENTS



SEA-MIN KELP MEAL *

As an animal feed supplement, kelp meal is the most economical way to provide a wide variety of amino acids, trace minerals and vitamins in a chelated form. It satisfies the need in animals for trace elements lacking or low in mixed feeds, pastures and other forages. It raises levels of production, improves digestion ability, and promotes healthy fur and coats. Improves the rates of conception and normal healthy births. Also helps increase the utilization of all feed ingredients and improves overall health of animals. Sea-Min is harvested from the cold fresh waters of the North Atlantic and sun-dried to preserve the natural vitamin and mineral content. Use at 1-2% of feed ration or free choice. Can be mixed 50-50 with salt or 1/3 each with salt and diatomaceous earth.

10 lb. Box	(12#)	\$15.00
25 lb. Bag	(28#)	\$31.00
50 lb. Bag	(53#)	\$55.25

3-in-1 Free Choice Feed Supplement

1/3 Sea-Min Kelp Meal
1/3 Diatomaceous Earth
1/3 Salt

Mix equal parts by weight. Feed free choice to livestock.

DIATOMACEOUS EARTH *

Ground fossil shells from the remains of single-cell algae called diatoms. Untreated, unheated, food grade, fresh water variety. Fine drying powder absorbs moisture and dehydrates on contact. Can be used as an **animal feed additive** up to 2% of feed ration.

4 lb. Bag	(5#)	\$ 9.75
15 lb. Bag	(18#)	\$ 15.00
50 lb. Bag	(54#)	\$ 32.50

REDMOND TRACE MINERAL SALT *

A natural salt containing a number of trace minerals that are essential to livestock growth and development. This pure rock salt (95% sodium chloride) is **not** kiln dried or processed with chemicals. (53#)

50 lb. Bag	\$12.50
------------	---------

FISH MEAL *

An excellent source of protein to mix in feed rations for livestock and poultry. Contains 60% crude protein, 6% fat and less than 2% crude fiber. Naturally preserved with Naturox. Allowed for organic livestock. (53#)

50 lb. Bag	\$75.00
------------	---------

BIO LAC-5 CONCENTRATE *

A probiotic product for livestock containing five different Lactobacillus microorganisms. Aids in stabilizing the pH in the intestinal tract and keeping the pathogenic bacteria in a normal balance. Helps improve herd health. Use 5 lbs. per ton of finished feed for most animals. (6#)

5 lb. Bag	\$12.90
-----------	---------

COPPER SULFATE

A source of copper and sulfur. Feed grade for livestock supplement. (5#)

4 lb. Bags \$16.00

INSECT AND DISEASE CONTROLS

PYGANIC CROP PROTECTION *

A botanical insecticide containing pyrethrum derived from chrysanthemums. Provides rapid knockdown to over 100 insects including ants, aphids, army worms, cabbage loopers, cucumber beetles, flea beetles, thrips, leafhoppers, Mexican bean beetles, and whiteflies. Approved for use on over 200 fruits and vegetables, as well as ornamentals. Can be used up to day of harvest and is non-persistent in the environment. Pyganic can also be used as a livestock, poultry, and barn spray to control flies, mosquitoes, lice, and other flying insects.

PYGANIC EC 1.4_{||}

Contains 1.4% pyrethrins. Use 1-2 oz. per gallon of water or 1-2 pints per acre in sufficient water for thorough coverage.

Quart (3#) \$ 58.00
Gallon (11#) 191.50

PYGANIC EC 5.0_{||}

Contains 5.0% pyrethrins. Use 1/4 - 1/2. teaspoon per gallon of water or 4.5 - 16 oz. per acre in sufficient water for thorough coverage.

Quart (3#) \$154.00
Gallon (11#) 567.00

MONTEREY GARDEN INSECT SPRAY (Spinosad) *



A bacterial product produced by fermentation of the naturally occurring product Spinosad. Can be used on ornamentals, lawns, vegetables, fruit trees, etc. to control caterpillars, Colorado Potato

Beetles, leafminers, thrips, borers, beetles, armyworms, sod webworms, spider mites, loopers, gypsy moth, codling moth, fire ants, and more. A Bacillus Thuringiensis replacement. Very safe around predatory beneficial insects. Use 2 oz. per gallon of water.

16 oz. Bottle (2#) \$18.50
32 oz. Bottle (4#) 35.00
Gallon (10#) 99.00

BON-NEEM



An organic combination of insecticidal soap plus Neem, an insecticide made from the botanical oils of the Indian Neem Tree. Highly effective on an extensive array of insects including aphids, mealybugs, scale crawlers, spider

mites, thrips, whiteflies, cabbage-worms, earwigs, flea beetles, grasshoppers, Japanese beetles, squash bugs, and chinch bugs. Can be used on house plants, herbs, flowers, shrubs, trees, vegetables, fruit, nuts, lawns, roses and in greenhouses. Water based. Use up to day of harvest. Use 5 tablespoons concentrate per gallon of water. (3#)

32 oz. Ready To Use \$9.99

M-PEDE INSECTICIDAL SOAP*

A natural insecticide made from potassium salts of fatty acids. Can be applied up to the day of harvest. Kills aphids, mealybugs, spider mites, leafhoppers, whiteflies, scales, grasshoppers, earwigs, etc., on contact but spares beneficial insects. Also controls powdery mildew. Use on house plants, vegetables, flowers and in greenhouses. Concentrated. Use a 2% spray solution per acre. (35#)

2-1/2 Gal. Concentrate \$89.25

DIATOMACEOUS EARTH INSECT KILLER

Made from the finely ground fossils of prehistoric fresh water diatoms. D.E. kills common household and garden pests like roaches, ants, fleas, beetles, slugs and other listed insects by mechanical means rather than poisons. A long lasting control, it sprinkles into cracks and crevices where bugs hide. Can also be used on pets for flea and tick control. (6#)



4.4 lb. Bag \$12.99

THURICIDE

A liquid microbial insecticide containing Bacillus Thuringiensis sub. kurstaki. Controls cabbage looper, hornworm, fruit tree roller, gypsy moth and other leaf eating worms. Non-toxic to humans, pets, birds, and bees. Mix 1 tablespoon per gallon of water.

8 oz. Bottle (1#) \$ 8.99
16 oz. Bottle (2#) 14.99

DIPEL DF *



A biological insecticide containing a high concentration of Bacillus Thuringiensis sub. Kurstaki, strain H-D1. Controls the larvae of loopers, hornworms, armyworms, leaf-rollers, cabbageworms, cutworms, webworms, gypsy moths, tent caterpillars, alfalfa caterpillars, and other lepidopterous insects. Can also be applied to stored grain to control Indian Meal Moth. May be used up to day of harvest. Use 1/2-4 teaspoons per gallon of water or 1/4-2 lbs. per acre depending on crop and infestation.

1 lb. Pkg. (3#) \$23.00
5 lb. Pkg. (7#) 99.25

COLORADO POTATO BEETLE BEATER



A highly effective biological insecticide that controls the tough Colorado Potato Beetle larvae on potatoes, tomatoes, and eggplants, and Elm Leaf Beetle larvae on shade trees as well as ornamentals. Contains spinosad. Applications should begin with first egg hatch using 1-2 oz. per gallon of water. (2#)

16 oz. Bottle \$19.95

TREE TANGLEFOOT *

A very sticky material applied as a band around tree trunks and vines to protect against climbing insects such as cankerworms, ants, and earwigs. All natural. Long lasting. Apply Tanglefoot to red balls and hang in apple trees to attract and catch apple maggots. (2#)



15 oz. Can \$10.75

HOT PEPPER WAX

A safe insect repellent made from Hot Cayenne Peppers. Will repel insects and insect larvae such as aphids, spider mites, thrips, leaf miners, white flies, lace bugs, mealy bugs, codling moths, leaf hoppers and scale from fruits, flowers, house plants and vegetables for up to 30 days. Cover plant with spray until wet but not dripping. Can be used through day of harvest. Use 4-8 oz. concentrate per gallon of water or 2-6 gallons per acre.



32 oz. Bottle	(3#)	\$10.95
(Ready to Use)		
16 oz. Concentrate	(2#)	12.95
Gallon Concentrate	(10#)	41.00



ORANGE GUARD HOME PEST CONTROL



A broad based insecticide made from an extract of orange peels. Kills on contact and repels hidden bugs for weeks without using toxic chemicals or gases. Effective against ants, roaches, fleas, flies, snails, slugs, silverfish, maggots and other insects. Can be sprayed in kitchens, pantries, pet bedding, trash cans and outdoors. Safe around food, children and pets. Fresh citrus scent. Ready to use spray bottle.

32 oz. Bottle	(4#)	\$13.50
Gallon	(10#)	37.50

HORT & DORM SPRAY OIL

A superior type paraffinic oil that may be used as a growing season spray or dormant oil spray to suffocate and repel eggs of red spiders, scale insects, aphids, bud moths, leaf roller, codling moth and other insects. Highly recommended for use on fruit and shade trees, shrubs, ornamentals, roses, and vegetables.

ALL SEASONS

Use 2-1/2 to 5 tablespoons per gallon of water.

Quart	(4#)	\$12.99
Gallon	(10#)	36.00

COMMERCIAL GROWER SIZE

Use 1/2 to 6 gallons per acre depending on crop and season.

2.5 Gallon	(26#)	\$39.00
------------	-------	---------

Use Liquid Seaweed on all fruit trees for increased production, higher sugar content, longer shelf life and less insect and disease problems. Spray every two weeks using one tablespoon seaweed per gallon of water.

NEEM OIL

An organic insecticide/fungicide containing 70% Neem Oil. Kills all stages of aphids, beetles, scale, mites, whitefly and leafrollers. Prevents and controls black spot, powdery mildew, anthracnose, blights and scab. Use on roses, flowers, fruit, vegetables, herbs and ornamentals. Use 2 tablespoons concentrate per gallon of water. Apply every 7-14 days.

ROSE RX 3-IN-1

32 oz. Ready to Use	(3#)	\$9.99
16 oz. Concentrate	(2#)	17.99

MONTEREY 70% NEEM OIL *

16 oz. Concentrate	(2#)	\$23.75
--------------------	------	---------

TRILOGY *

A certifiable fungicide-miticide-insecticide containing 70% extract of Neem Oil. Use on vegetables, fruits, nuts, melons, ornamentals, and agronomic crops. Prevents and controls fungal diseases including black spot, powdery mildew, downy mildew, anthracnose, rust, leaf spot, botrytis, scab, blight, and alternaria. Also controls whiteflies, mealybugs, aphids, leafhoppers, mites and scales. Apply 1-2% solution every 7-14 days for diseases and every 7-21 days for insects. (25#)

2.5 Gallons \$108.00

SURROUND WP CROP PROTECTANT *

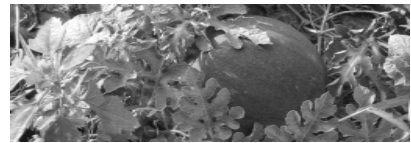
A natural mineral protectant for fruit trees and vegetables derived from Kaolin Clay. Coats the plants with a white powder film that acts as a broad spectrum crop protectant. Can be used in home fruit and vegetable gardens as well as commercial orchards and vegetable farms for control of apple maggots, apple rust mites, codling moths, Japanese beetles, June beetles, leafhoppers, leafrollers, pear psylla, pear rust mites, plum curculio, Colorado potato beetles, cucumber beetles, flea beetles, and more. Must be applied early before pests arrive. Use 1/2 lb. (about 3 cups) per gallon of water or 50 lbs. per acre in 100-200 gallons of water. (1/2 gallon of mixed spray will cover about one mature semi-dwarf tree.) Reapply every 7-21 days or after heavy rains if the white appearance is gone. (28#)

25 lb. Bag \$40.20

GARDEN DUST OR SPRAY

An all-purpose, organic insecticide-fungicide containing pyrethrin, sulfur and copper. Use on vegetables, fruit and flowers to control aphids, beetles, spider mites, roller worms, cabbage worms, whiteflies, flea hoppers, and more. Especially recommended for use on cukes, melons, squash, and tomatoes to control flea beetles, striped and Twelve-Spotted Cucumber Beetles. Also prevents and controls wilt, scab, anthracnose, and downy and powdery mildew. As a dust, 1 lb. covers 1,000 sq. ft., or spray using 2 tablespoons per gallon of water.

1 lb. Can	(2#)	\$ 8.80
4 lb. Bag	(5#)	17.30
10 lb. Bag	(11#)	38.00



COPPER DUST OR SPRAY (BORDO)

A 7% copper sulfate for controlling early and late blight, leaf spot, downy mildew, anthracnose and other fungal diseases on various vegetables, flowers, ornamentals, grapes, and other fruits. Won't burn plants. Dust or use 2-6 oz. per gallon of water.

1 lb. Can	(2#)	\$ 7.99
4 lb. Bag	(5#)	12.99
10 lb. Bag	(11#)	33.40

Use the Dustin-Mizer on page 18 for easy application of dust products.

CUEVA *

A certifiable, flowable liquid copper fungicide for control of downy mildew, powdery mildew, white and gray mold, septoria, anthracnose, leaf and bacterial spot, bacterial blights, botrytis, scab, soft and bottom rot, early and late blights, dollar spot and more. Can be used on vegetables, fruits, field crops, herbs, ornamentals and turf. Use .5-2 gallons per acre. For best control, apply two weeks before diseases normally appear and repeat at 7-10 day intervals. (25#)

2.5 Gallons \$108.00

KOCIDE 3000

A copper fungicide-bactericide for the control of leaf spot, early and late blight, anthracnose, leaf blight, fruit rot, angular leaf spot, apple scab, fire blight, leaf curl, downy and powdery mildew, septoria, bacterial blight and more. May also provide light frost injury protection. Begin application at first sign of disease and repeat as needed. Use 1/2-2 lbs. per acre for vegetables and field crops; 1/2-5 lbs. per acre for fruit. 1 tablespoon per 1000 sq. ft. is equivalent to 1/2 lb. per acre.

4 lb. Bag (5#) \$ 58.00

10 lb. Bag (11#) 127.00

LIQUID COPPER

A liquid copper soap (Cueva™) for excellent control of early and late blight, leaf spot, powdery mildew, anthracnose, scab, rust, mold and other fungal diseases of vegetables, fruits, flowers, ornamentals, and turf. Can be applied up to the day of harvest. Liquid concentrate. Use 1/2-2 oz. per gallon of water every 7 to 10 days. (2#) Pint \$16.50

NUCOP 50 WP *

A certifiable copper fungicide-bactericide for control of anthracnose, fire blight, canker, blossom end rot, scab, bacterial blights, downy and powdery mildew, leaf spot, black and brown rot, septoria and more. Use 2-3 oz. per gallon of water or 1-3 lbs. in 20 gallons of water per acre on vegetables, 1-12 lbs. per acre on fruit. Repeat every 7-10 days or as needed. (21#)



20 lb. Bags \$127.00

SERENADE BIOFUNGICIDE *

A broad spectrum preventative biofungicide recommended for the control or suppression of anthracnose, bacterial spot, black spot, black mold, botrytis, leaf blight, downy and powdery mildew, early and late blight, fire blight, gray mold, scab and more. Use on a wide variety of vegetables, fruit, flowers and ornamentals. For best results, apply prior to disease development or at first sign of infection. Repeat every 7 days. Can be applied up to and including the day of harvest.

SERENADE GARDEN

Mix 1 - 4 oz. concentrate per gallon of water. Use 15 oz. of spray solution per 100 sq. ft.

32 oz. Ready to Use (3#) \$ 9.98

32 oz. Concentrate (3#) 24.95

SERENADE MAX POWDER

Commercial grower size. Use at the rate of 1/4-1/3 cup per gallon of water or 1-5 lbs. per acre depending on crop and disease.

6 lb. Bag (7#) \$129.95

WETTABLE SULFUR DUST OR SPRAY



Super fine 90% sulfur dust. Controls common fungus diseases such as powdery mildew, black spot, scab, rust, brown rot and red spiders. Use on grapes, other fruits, vegetables, and various ornamentals. Can be dusted on or mixed 2-1/2 tablespoons per gallon of water for spraying. Can also be used to adjust soil pH.

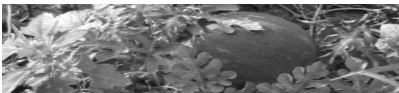
4 lb. Bag	(5#)	\$13.50
30 lb. Bag	(33#)	32.75

LIME SULFUR SPRAY



An organic fungicide-insecticide for use on fruit, berries, nuts, ornamentals, trees, and flowers. Gives in-season control of peach leaf curl, powdery mildew, scales, anthracnose, leaf spot on fruits and flowers, brown rot on fruits, rust and red spider on roses. Use 4-16 tablespoons per gallon of water; Or 1/2-6 gallons per 100 gallons of water depending on crop and season. (3#)

Quart		\$15.00
-------	--	---------



SLUG MAGIC

Proven slug and snail killer made from iron phosphate. Safe for use around pets, wildlife, worms and beneficials. Use around vegetables, fruit trees, flowers, berries, shrubs, lawns and in greenhouses. Covers 1500 sq. ft. (2#)

24 oz. Can		\$12.99
------------	--	---------

MILKY SPORE LI



An excellent natural bacterial control for Japanese Beetle larvae. Kills grubs that eat the roots of grass causing bare spots and destruction of the lawn. This natural product is not affected by lawn chemicals. Will not harm other insects, animals, plants, or humans. Can be used in gardens and pastures.

MILKY SPORE POWDER

Apply 1 teaspoon powder every four feet in checkerboard pattern. One application will remain viable for 10-15 years.

10 oz. Can	(2#)	\$31.90
<i>Treats 2,500 sq. ft.</i>		
40 oz. Can	(4#)	96.00
<i>Treats 10,000 sq. ft.</i>		

MILKY SPORE SPREADER MIX

A granular Milky Spore which can be applied with a lawn drop spreader. Apply spring, summer and fall for two years to build up the maximum amount of spores in the soil. Water in for 15 minutes. Remains viable for 10-15 years. A 20 lb. bag treats 7,000 sq. ft.

20 lb. Bag	(23#)	\$42.60
------------	-------	---------

GRUB BEATER

A botanical insecticide derived from the seeds of the neem tree that kills and repels a large variety of insects including white grubs, chinch bugs, mole crickets, webworms, armyworms, billbugs, and hyperodes weevil. Easy on pollinators and other beneficial insects. Ready to spray bottle attaches to hose for easy application. Treats 3000 sq. ft. (3#)

32 oz. RTS Bottle		\$24.60
-------------------	--	---------

PYRETHRIN GARDEN INSECT SPRAY



A liquid concentrate of naturally occurring Pyrethrin for use on vegetables, roses, flowers, fruits, and ornamentals. Controls a wide variety of insects

including aphids, leafhoppers, thrips, cabbage loopers, beetles, mites, mealy bugs, whiteflies, and slugs. Dilute 3-5 tablespoons per gallon of water.

8 oz. Bottle	(1#)	\$12.99
16 oz. Bottle	(2#)	19.99
Gallon	(11#)	108.50

REPELLENTS

LIQUID FENCE ANIMAL REPELLENT

An all natural, effective deer and rabbit repellent that works on an odor that animals find offensive. Trains animals to avoid the treated area, thus preventing damage to valuable landscaping orchards, etc. Safe for humans, animals, and the environment. Apply once per month. Has a 100% satisfaction guarantee or refund of your purchase price. Use 1 cup concentrate per gallon of water. Gallon ready to use covers 2,000 sq. ft.



Quart Ready To Use	(3#)	\$14.79
Gallon Ready To Use	(10#)	29.95
40 oz. Concentrate	(3#)	43.50

Treats 10,000 sq. ft.

MOLEMAX

Effectively repels moles, voles, rabbits, skunks and other burrowing animals. Use in lawns, flower beds, gardens, and when planting bulbs and shrubs. Easy to apply granules contain 10% Castor Oil. For year around control, apply in spring, summer and fall. Use 1 lb. of product per 500 sq. ft. (6#)

5 lb. Shaker Jug \$12.99

POTTING & COMPOST SUPPLIES

PLANT PRO POTTING SOIL *

Our exclusive organic potting mix made from sphagnum peat moss, vermiculite, sharp sand, and perlite. Enriched with Re-Vita Compost Plus 3-3-3 with kelp, humate, rock phosphate and greensand for better fertilization. Use on all house and bedding plants. Can add one part vermiculite to 3 parts Plant Pro for seed starting. Compare with other potting soils. You'll see the difference! (25#)



30 qt. Bag \$ 7.25

COMPOST MAKER (Bonide)

Contains billions of beneficial organisms that aid in converting garbage, leaves, vegetables, and wastes into valuable compost. Stabilizes nutrients and humus, plus reduces odors. May be broadcast dry or sprayed with water. Use 1 lb. per 500-1000 lbs. of raw material equivalent to 10-20 cubic ft. (2#)

1 lb. Can \$ 7.99

VERMICULITE *

A natural mica mineral. Add to soil to improve aeration and provide moisture retention. Can also be used for seed germination and cutting propagation or mixed with Plant Pro Potting Soil.

20 qt. Bag (11#) \$ 7.50
4 cu. ft. Bag 21.00
(Sorry, we cannot ship 4 cu. ft. via UPS)

HERBICIDES

SCYTHE HERBICIDE

A non-selective, non-systemic contact herbicide that lets you get rid of unwanted weeds and grass. Made from naturally occurring fatty acids. Fast acting. Use at rate from 3%-10% in water depending on size of foliage. One gallon of spray mixture will cover approximately 400 sq. ft. of area.

Gallon Concentrate. (12#) \$89.00
2.5 Gallon Concentrate (26#) 180.50

BURN OUT II WEED & GRASS KILLER *

An all natural weed and grass killer made from clove oil, vinegar and lemon juice components. Use in driveways, patios, fence rows, etc., for non-selective control of broad leaf and grass weeds. One gallon of ready to use covers 600 sq. ft. Mix 1 part concentrate to 3 parts water.

24 oz. Bottle RTU (3#) \$ 8.99
Gallon Ready to use (10#) 29.00
Gallon Concentrate. (10#) 50.33
2.5 Gallon Concentrate (25#) 93.50
(Makes 10 gallons of spray)

WEED ZAP *

A certifiable non-selective, broad spectrum contact herbicide made from clove and cinnamon oils. Controls actively growing annual and perennial broadleaf and grassy weeds. Does not translocate. Use 6.4 oz. per gallon of water or 5 gallons per 100 gallons of water.

Quart Concentrate. (3#) \$ 29.40
Gallon Concentrate. (10#) 100.00
2.5 Gallon Concentrate.(25#) 221.75

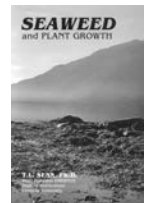


BOOKS

SEAWEED AND PLANT GROWTH

Dr. T. L. Senn, who was in charge of seaweed research at Clemson University for over 30 years, describes different kinds of seaweed, their composition and proper utilization. He goes on to explain the important role seaweed plays in plant growth and how it increases cold hardiness, plus insect and disease defenses. He then tells how seaweed affects nematodes, increases keeping qualities of crops, and relieves plant stress. Dr. Senn also talks about the micro nutrients and growth promoters that are in seaweed and how they effect plants in so many ways. Whether you're a home gardener, farmer or grower this book is a must for you. (1#)

Sea weed and plant growth \$10.00



SOIL TESTING

SOIL TESTING

Soil testing is a valuable tool in determining the condition and needs of your soil. This can result in more productive crop yields, richer lawn and gardens, plus savings in your fertilization program. Analysis includes Cation Exchange Capacity (C.E.C) of your soil, pH, organic matter content and levels of nitrogen, potassium, phosphorus, calcium and magnesium as well as the base saturation percentage for calcium, magnesium, potassium and hydrogen. Recommendations are made using natural products. Simply take 8-10 probes of soil in area to be tested, mix together, and send 2 cups of mixture to us. Identify whether the test is for garden, lawn or field. If field, state what crop was planted last year and what crop will be planted this year. Allow at least **two weeks** for results. Call us for the Soil Testing Information Sheet that's right for you.

Payment required with soil sample.

BASIC SOIL TEST

\$15.00 per sample

MICRONUTRIENT PACKAGE

Additional tests for iron, copper, manganese, boron, sulfur, and zinc.

\$15.00 per sample



EQUIPMENT

DUSTIN-MIZER

A superior light-weight dust applicator



designed to spread even the finest

particles such as diatomaceous earth. The Venturi Action Blower gives uniform, total dust dispersion. Holds one pound of material. Made of high impact plastic and stainless steel for years of trouble free service. Includes deflector attachment (not shown) which directs dust upwards to the undersides of leaves for better insect control. (3#) Dustin-Mizer \$46.50



Benefits of Calcium in Re-Vita fertilizers

Calcium, is a vital nutrient to plant health, a major component of all Re-Vita fertilizers. Plants need calcium in large quantities as it is an essential part of plant cell wall structure. It provides for a normal transport and retention of other elements as well as plant strength. The composted poultry manure used in Re-Vita fertilizer come from egg laying poultry operations and is naturally high in calcium, ranging between 9-12%. As a soil amendment, calcium helps to maintain chemical balance in the soil, reduce soil salinity, and improve water penetration which enhances overall soil and plant health.

About Ohio Earth Food -- We are a company that was founded in 1972. Over the years we have developed a line of all natural products which are of the finest quality and proven in performance for garden, lawn and commercial use. Our goal is to aid growers in producing good, healthy food, as well as improving the quality of the soil and the environment for future generations.

We do everything possible to keep our prices reasonable, which is why we have a very simple catalog sent once per year. Prices are subject to change without notice. Once you have ordered from us you will receive our new catalog each January. Be assured your personal information is confidential to us. We do not sell, rent or share our mailing list.

Please feel free to contact us if you need further information about any of our products or if you would like to obtain a **Grower Price List** for farmers, a **Commercial Price List** for nurseries, lawn care, landscapers, golf courses, and parks, or **Truckload Quotes**.

Certified Organic Growers -- Most of our products meet the National Organic Program standards. Please call us for assistance with questions you have about specific products. Then contact your certification agency to confirm their acceptability.

We greatly appreciate your interest in Ohio Earth Food and look forward to serving you. May you have a **bountiful** 2013!

Ordering and Shipping -- Orders are usually shipped the day after we receive them. Small orders are shipped via UPS or UPS hundredweight if over 200 lbs. Orders over 400 lbs. are shipped the most economical way, either by UPS or common carrier.

Shipping weights are in parentheses behind product. Shipping weight must be added separately.

UPS Shipments -- Use the charts on Page 21 to estimate transportation charges for UPS shipments. On the **ZONE CHART** find the first 3 numbers of your Zip Code in the left column. To the right is your zone from Hartville, OH. Then follow down the corresponding zone column on the **RATE CHART** to the correct package weight for shipping charges. In addition to these rates UPS adds a fuel surcharge and a \$2.75 per package charge for extended areas. Each package valued over \$100 will have a minimum insurance charge of \$2.25 plus \$.75 for every \$100 over \$300.

Generally shipments over 400 lbs. are more reasonable when shipped by commercial truck. However, someone **must** be there to unload. Truck shipments will be palletized instead of boxed at the rate of \$5.00 per pallet plus shipping charges.

We will gladly quote a freight rate or help figure your UPS charges.

ZONE CHART

RATE CHART

Dest. ZIP	UPS Zone	Dest. ZIP	UPS Zone	Weight	Zone 2	Zone 3	Zone 4	Zone 5	Zone 6	Zone 7	Zone 8
004-005	004	500-505	005	1 Lbs.	\$9.12	\$9.66	\$9.81	\$10.29	\$10.81	\$10.90	\$10.97
010-042	004	506-507	004	2	\$9.69	\$10.30	\$11.13	\$11.42	\$12.08	\$12.27	\$12.64
043-049	005	508-516	005	3	\$9.78	\$10.79	\$11.71	\$12.12	\$12.80	\$13.13	\$13.96
050-089	004	520-539	004	4	\$10.05	\$11.06	\$12.34	\$12.93	\$13.50	\$13.94	\$14.94
100-129	004	540	005	5	\$10.32	\$11.21	\$12.81	\$13.41	\$14.03	\$14.59	\$15.72
130-132	003	541-547	004	6	\$10.60	\$11.55	\$13.02	\$13.73	\$14.26	\$15.08	\$16.28
133-136	004	548	005	7	\$11.11	\$11.88	\$13.26	\$14.05	\$14.66	\$15.42	\$16.76
137-146	003	549	004	8	\$11.53	\$12.19	\$13.59	\$14.29	\$15.10	\$16.10	\$17.71
147	002	550-558	005	9	\$11.78	\$12.49	\$13.80	\$14.61	\$15.43	\$16.91	\$18.77
148-149	003	559	004	10	\$12.14	\$12.54	\$14.06	\$15.02	\$16.09	\$18.09	\$20.04
150-167	002	560-576	005	11	\$12.55	\$13.05	\$14.23	\$15.27	\$16.57	\$19.23	\$21.23
168-179	003	577	006	12	\$12.90	\$13.44	\$14.48	\$15.51	\$17.31	\$20.33	\$22.61
180-181	004	580-584	005	13	\$13.25	\$13.80	\$14.66	\$15.87	\$18.04	\$21.52	\$24.01
182	003	585-588	006	14	\$13.50	\$14.18	\$14.94	\$16.23	\$19.03	\$22.61	\$25.36
183	004	590-591	007	15	\$13.75	\$14.63	\$15.18	\$16.62	\$20.01	\$23.77	\$26.77
184-188	003	592-593	006	16	\$13.94	\$14.85	\$15.27	\$16.91	\$20.77	\$24.75	\$27.99
189-194	004	594-599	007	17	\$14.12	\$15.32	\$15.77	\$17.61	\$21.98	\$26.21	\$29.65
195-214	003	600-639	004	18	\$14.28	\$15.59	\$16.23	\$18.53	\$22.98	\$27.36	\$31.17
215	002	640-649	005	19	\$14.48	\$16.13	\$16.85	\$19.34	\$23.99	\$28.53	\$32.66
216-217	003	650-652	004	20	\$14.75	\$16.65	\$17.43	\$20.19	\$25.05	\$29.70	\$34.16
218	004	653	005	21	\$15.01	\$17.16	\$17.96	\$21.05	\$26.07	\$30.88	\$35.54
219-232	003	654-655	004	22	\$15.38	\$17.65	\$18.61	\$21.82	\$27.13	\$32.09	\$37.09
233-238	004	656-676	005	23	\$15.72	\$18.19	\$19.21	\$22.60	\$28.15	\$33.26	\$38.59
239-259	003	677-679	006	24	\$16.03	\$18.66	\$19.81	\$23.35	\$29.23	\$34.42	\$40.08
260-267	002	680-689	005	25	\$16.47	\$19.18	\$20.36	\$24.01	\$30.25	\$35.59	\$41.60
268	003	690-691	006	26	\$16.86	\$19.58	\$20.92	\$24.78	\$31.37	\$36.70	\$43.01
270	004	692	005	27	\$17.24	\$20.03	\$21.41	\$25.53	\$32.41	\$37.89	\$44.49
271	003	693	006	28	\$17.56	\$20.52	\$22.08	\$26.30	\$33.44	\$39.03	\$46.05
272-314	004	700-722	005	29	\$17.92	\$20.91	\$22.72	\$26.92	\$33.33	\$39.92	\$47.31
315-317	005	723-724	004	30	\$18.35	\$21.44	\$23.40	\$27.70	\$35.40	\$41.06	\$48.84
318-319	004	725-732	005	31	\$18.64	\$21.77	\$23.92	\$28.47	\$36.40	\$42.18	\$50.23
320-329	005	733	006	32	\$18.79	\$22.24	\$24.58	\$29.28	\$37.44	\$43.34	\$51.75
330-332	006	734-737	005	33	\$19.15	\$22.75	\$25.20	\$30.05	\$38.42	\$44.51	\$53.20
333-339	005	738-739	006	34	\$19.32	\$23.25	\$25.75	\$30.82	\$39.48	\$45.67	\$54.68
341	005	740-759	005	35	\$19.68	\$23.81	\$26.35	\$31.57	\$40.48	\$46.84	\$56.11
342-349	005	760-797	006	36	\$20.30	\$24.04	\$26.82	\$32.36	\$41.49	\$47.98	\$57.34
350-353	004	798-799	007	37	\$20.61	\$24.58	\$27.35	\$33.05	\$42.41	\$49.12	\$58.44
354	005	800-812	006	38	\$20.91	\$24.96	\$27.96	\$33.86	\$43.36	\$50.30	\$59.54
355-359	004	813-815	007	39	\$21.11	\$25.45	\$28.59	\$34.57	\$44.67	\$51.88	\$60.64
360-361	005	816-820	006	40	\$21.39	\$26.02	\$29.22	\$35.28	\$45.54	\$52.93	\$61.62
362	004	821	007	41	\$21.74	\$26.39	\$29.74	\$35.96	\$46.35	\$53.94	\$62.47
363-367	005	822-828	006	42	\$22.02	\$26.70	\$30.29	\$36.64	\$47.09	\$54.94	\$63.45
368	004	829-834	007	43	\$22.31	\$27.17	\$30.92	\$37.40	\$47.98	\$56.10	\$64.55
369	005	835	008	44	\$22.54	\$27.63	\$31.43	\$38.07	\$48.84	\$57.27	\$65.24
370-375	004	836-837	007	45	\$22.77	\$28.07	\$32.03	\$38.84	\$49.68	\$58.42	\$66.33
376	003	838	008	46	\$22.97	\$28.50	\$32.42	\$39.54	\$50.46	\$59.58	\$67.41
377-386	004	840-853	007	47	\$23.21	\$28.70	\$32.94	\$40.20	\$51.16	\$60.73	\$68.49
387	005	854	008	48	\$23.40	\$29.03	\$33.37	\$40.88	\$51.92	\$61.90	\$69.60
388	004	855-863	007	49	\$23.60	\$29.35	\$33.81	\$41.61	\$52.59	\$63.07	\$70.68
389-397	005	864	008	50	\$23.74	\$29.61	\$34.20	\$41.73	\$52.87	\$63.71	\$71.75
398	005	865-874	007	51	\$23.93	\$29.83	\$34.47	\$41.98	\$53.33	\$64.55	\$72.15
399	004	875-877	006	52	\$24.12	\$30.00	\$34.70	\$42.53	\$53.87	\$65.44	\$73.22
400-418	003	878-880	007	53	\$24.32	\$30.30	\$34.86	\$43.07	\$54.38	\$66.13	\$74.30
420-424	004	881-882	006	54	\$24.53	\$30.54	\$35.28	\$43.65	\$54.95	\$66.60	\$75.23
425-427	003	883	007	55	\$24.71	\$30.74	\$35.57	\$44.31	\$55.37	\$66.84	\$76.12
430-449	002	884	006	56	\$24.89	\$30.96	\$35.90	\$44.92	\$55.68	\$66.94	\$77.05
450-454	003	885	007	57	\$25.13	\$31.23	\$36.21	\$45.57	\$56.28	\$67.45	\$77.88
455-458	002	889-892	008	58	\$25.37	\$31.50	\$36.56	\$46.05	\$56.91	\$67.85	\$78.51
459-462	003	893	007	59	\$25.61	\$31.81	\$36.94	\$46.48	\$57.44	\$68.23	\$79.09
463-464	004	894-897	008	60	\$25.86	\$32.13	\$37.33	\$46.83	\$57.93	\$68.57	\$79.58
465-474	003	898	007	61	\$26.06	\$32.38	\$37.65	\$47.36	\$58.45	\$68.98	\$80.05
475-478	004	900-961	008	62	\$26.27	\$32.63	\$37.89	\$47.78	\$58.87	\$69.38	\$80.55
479	003	970-978	008	63	\$26.52	\$32.94	\$38.18	\$48.19	\$59.23	\$69.83	\$81.03
480-483	002	979	007	64	\$26.73	\$33.28	\$38.50	\$48.52	\$59.65	\$70.30	\$81.50
484-496	003	980-986	008	65	\$26.94	\$33.66	\$38.92	\$48.85	\$60.18	\$70.67	\$82.00
497-499	004	988-994	008	66	\$27.15	\$34.05	\$39.36	\$49.19	\$60.79	\$71.02	\$82.58
				67	\$27.36	\$34.42	\$39.74	\$49.46	\$61.27	\$71.36	\$82.81
				68	\$27.61	\$34.76	\$40.12	\$49.77	\$61.59	\$71.77	\$82.98
				69	\$27.81	\$35.12	\$40.49	\$50.04	\$61.94	\$72.14	\$83.20
				70	\$28.74	\$35.45	\$40.88	\$50.23	\$62.08	\$72.39	\$83.25

Prices are subject to change without notice. 21

Agro Lig Humate	5	Kocide 3000	15
All Seasons Hort & Dorm Spray	13	Lime.....	7
Animal Feed Supplements.....	10, 11	Lime Sulfur Spray	16
Animal Repellents.....	17	Liquid Fence	17
Asco Spray Seaweed Powder.....	9	Maxicrop Liquid Seaweed	7
Bio-Hume Liquid Humus	8	Maxicrop Plus Iron	8
Bio Lac 5 Concentrate	10	Maxicrop Soluble Powder.....	8
Bon Neem	11	Milky Spore	16
Bone Meal	5	MoleMax.....	17
Books	18	Monterey Garden Insect Spray	11
Burn Out II Weed Killer.....	18	Monterey 70% Neem Oil	13
Colorado Potato Beetle Beater.....	12	M-Pede Insecticidal Soap	12
Compost Maker	17	Neem	13
Copper Dust or Spray (Bordo).....	14	NuCop 50 WP	15
Copper (Liquid)	15	Orange Guard Home Pest Control	13
Copper Sulfate	11	Plant Pro Potting Soil	17
Corn Gluten Lawn Plus 9-0-0	4	Potting Soil.....	17
Cotton Seed Meal.....	5	Pyganic Crop Protection	11
Cueva	15	Pyrethrin Garden Insect Spray	17
Diatomaceous Earth	10	Redmond Trace Mineral Salt	10
Dipel DF.....	12	Re-Vita Compost Plus 3-3-3	2
Dolomite Lime	7	Re-Vita Hi-K 2-3-16	2
Dormant Oil.....	13	Re-Vita Lawn Fertilizer 8-3-3.....	3
Dried Blood.....	4	Re-Vita Pro 5-4-5	2
Dustin-Mizer.....	19	Re-vita Complete 5-4-3	3
Feathermeal.....	4	Rock Phosphate.....	4
Fertilizers	1-6	Rose Rx 3 in 1.....	13
Fish Fertilizer, Liquid	7	Scythe Herbicide.....	18
Fish Fertilizer, Soluble Powder.....	9	Sea-Min Kelp Meal	6, 10
Fish Meal	4, 10	Serenade Biofungicide	15
Garden Dust or Spray.....	14	Slug Magic	16
Greensand	5	Soft Rock Phosphate	4
Grub Beater	16	Soil Testing	19
Grub Control	16	Spinosad	11, 12
Gypsum.....	7	Stimplex	9
Herbicides	18	Sulfate of Potash	5
Hi-Calcium Lime	7	Sulfur.....	6
Hot Pepper Wax	13	Sulfur Dust or Spray	16
Humates	5, 8, 9	Sul Po Mag.....	5
Humus WP80.....	9	Surround Crop Protectant	14
Insect and Disease Control.....	13-15	Tree Tanglefoot.....	12
Insecticidal Soap	12	Thuricide.....	12
Jump Start	8	Trilogy.....	14
Jump Start D-10.....	6	Vermiculite.....	18
Kelp Meal	6, 10	Weed Zap.....	18
		Worm Castings.....	6

PSRST STD
U.S. Postage
PAID
CANTON, OH
Permit No. 288

OHIO EARTH FOOD, INC.
5488 Swamp St., N.E.
Hartsville, OH 44632

Return Service Requested

